

9. Using Web Browsers

Moodle has a simple interface that works well with all modern web browsers.

Generally users find that Firefox and Chrome work best with Moodle.

Moodle will run in Windows 7 & 8, Mac OS-X and Linux operating systems. In addition to this it will also operate on tablets, iPads and smart phones.



9.1 Recommended Browsers

MOZILLA FIREFOX

- The latest versions of Mozilla Firefox are recommended. This includes versions 20 and above.
- Older versions of Firefox will generally still work but are not recommended for Moodle and are not supported.

GOOGLE CHROME

- The latest versions of Google Chrome are recommended. This includes versions 20 and above.
- Older versions of Chrome will generally still work but are not recommended for Moodle and are not supported.

MICROSOFT INTERNET EXPLORER

- The latest versions of Internet Explorer are recommended. This includes Internet Explorer 9 and above.
- Internet Explorer 8 is no longer fully supported but should still work with Moodle.
- Internet Explorer 6 & 7 are not recommended for Moodle and are not supported.

APPLE SAFARI

- The latest versions of Apple Safari are recommended. This includes versions 6 and above.
- Older versions of Safari will generally still work but are not recommended for Moodle and are not supported.

9.2 Browser Pop-ups

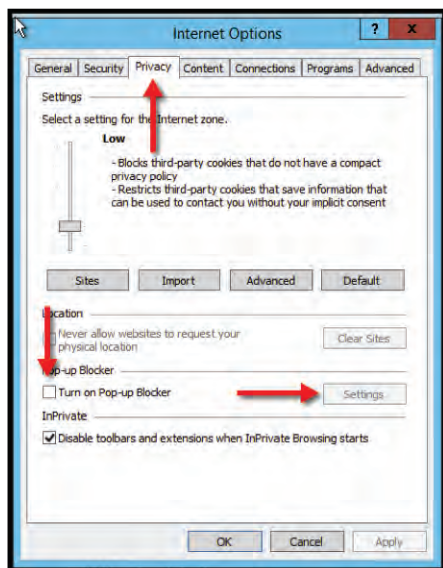
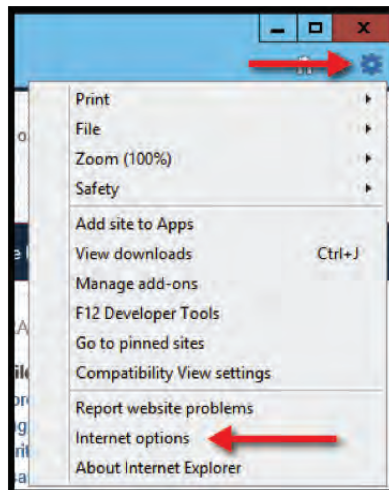
Most web browsers include a feature to block pop-up windows. While this may eliminate unwanted or bothersome pop-up windows, the feature sometimes can impede the functionality of legitimate or useful websites. Moodle does use pop-ups so it is important that pop-ups are enabled when using the Laidlaw Moodle website.

Note: The instructions below are for the latest versions of the web browsers listed. There may be variations depending on the actual version of the browser that you use.

INTERNET EXPLORER (WINDOWS 7/8)

When a website attempts to launch a new pop-up window, you may see dialog boxes alerting you of pop-up windows that have been blocked. Follow the instructions below to allow pop-up windows on a per-website basis.

- Click on the Tools menu at the top right of the browser.
- Click on the Internet Options.



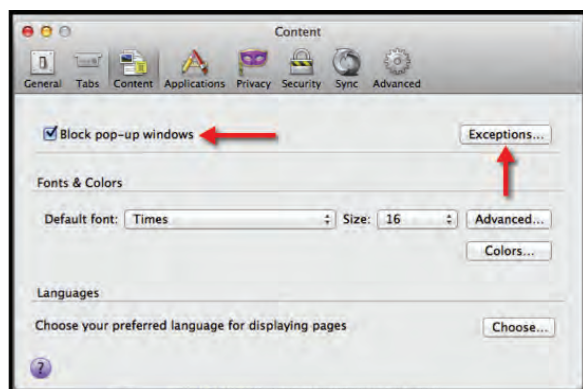
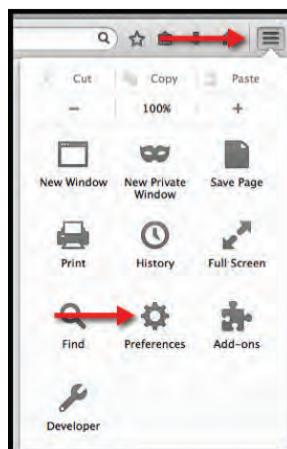
- Select the Privacy tab.
- Under Pop-up Blocker, click Settings. The Pop-up Blocker Settings dialog box opens.

- Enter the web address for the Laidlaw Moodle website – learn.laidlaw.ac.nz.
- Click Add. The selected website is added to the list of allowed sites.
- Click Close to close the Pop-up Blocker Settings dialog box and click the OK button to close the Internet Options dialog box.



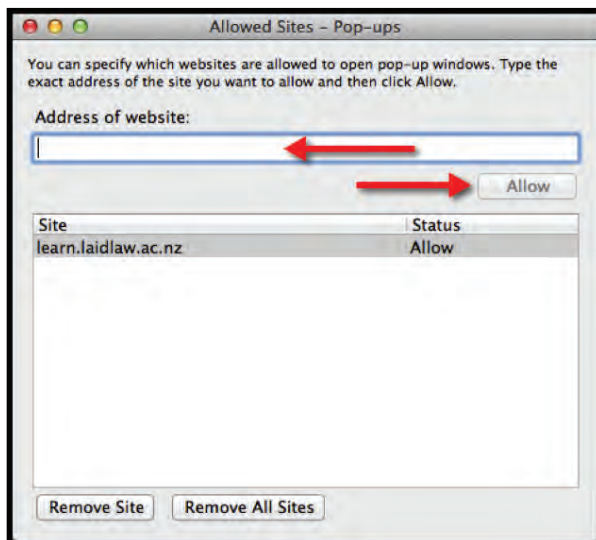
MOZILLA FIREFOX

- Click on the hamburger menu on the top right hand side of Firefox's address bar.
- Click on Preferences.



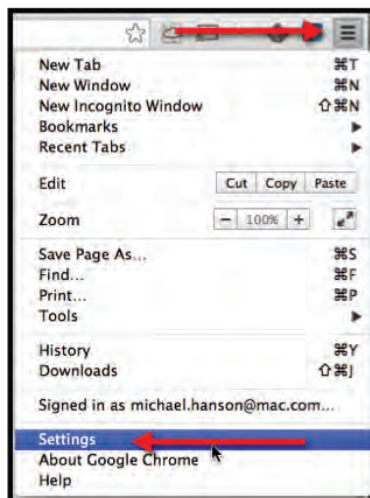
- Change the 'Content' tab.
- Click 'Exceptions'.

- Add the Laidlaw Moodle website address **learn.laidlaw.ac.nz** and 'Allow' access to this site.

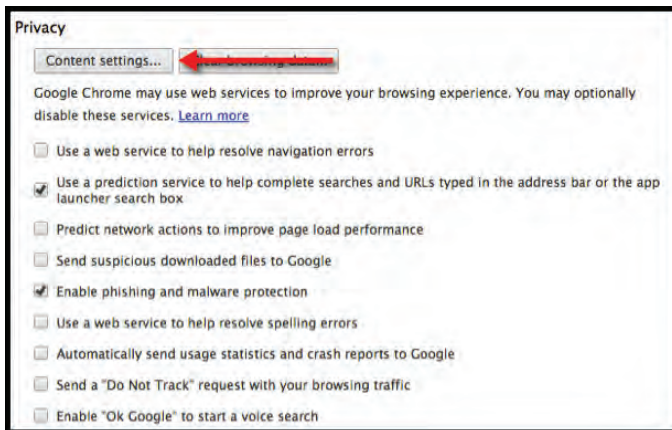


CHROME

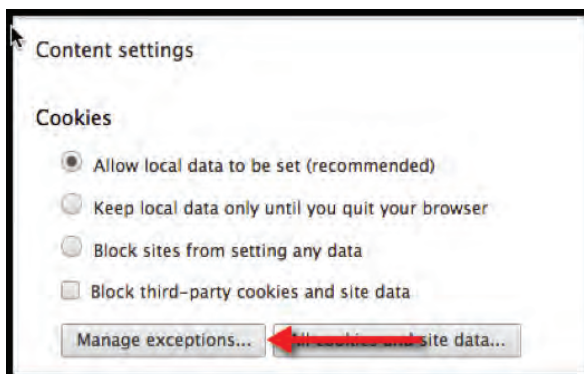
- Click on the hamburger menu on the top right hand side of Chrome's address bar.
- Click on Settings.
- Click on "Show advanced settings" link in the window that appears.



- Change the Content settings.



- Click "Manage exceptions".



- Add the Laidlaw Moodle website address **learn.laidlaw.ac.nz** and 'Allow' access to this site.



SAFARI

Safari for OS X has no per-website control over blocking pop-ups windows. Pop-ups are either blocked, or they are not. To allow pop-ups:

- From the Safari menu, choose Preferences... and click the Security tab.
- Ensure the Block pop-up windows option is not checked. Unchecking this option will allow pop-ups.
- To block pop-ups once again, check the Block pop-up windows checkbox.



9.3 Getting Help

If you need assistance in using Moodle or Email then please contact the Laidlaw Helpdesk.

- By phone – 09-837 9782 or from on campus dial ext: 882.
- By email – ithelpdesk@laidlaw.ac.nz
- Or the online helpdesk <http://helpdesk.laidlaw.ac.nz>